



# GTX-14 Technical Specifications

High Definition · 53' Single Expando · Multi-Format (Native 1080i, 720p, 24p, 30p)

## PRODUCTION & EFFECTS

Grass Valley K-Frame Kayenne Elite HD Switcher  
96 Inputs / 48 Outputs / 6 Mix Effects  
6 Downstream Keyers per ME  
Programmable Clean Feed  
16 iDPM / 4 eDPM  
Chroma Key on all M/E's  
K2 Summit 4-Channel Server  
32 GB Image Storer  
Image Store w/ 10 Fill & Key Channels  
FlexiKey and Double Take  
ME Viewer  
EVS 4-Channel HD XT2-Spot Box w/interface  
& Lance Controller  
GV Trinx 256 x 256 HD/SD Router

## MONITOR WALL

15 32" 16 x 9 HD LCD Monitors  
Evertz VIP-X Routing & Multi-Image Display

## GRAPHICS

Chyron HyperX3

## AUDIO

Calrec Artemis Beam Console w/ Blue Fin2  
56 Dual Faders w/ Hydra2  
LCD Bar Graph and VU Metering  
MADI Interface (96x96 AES/96x64  
Analog)  
Genelec 5.1 Surround Sound Monitoring  
DK Stereo Surround Audio Display  
Dolby E System (DP570, DP571, DP563, DP564)  
Yamaha SPX2000 Multi-Effects  
Processor 2 Rane Audio Delays  
2 dbx 166 XL Compressors  
1 dbx 1046 Quad Compressors  
1 360 Systems Digicart EX  
CD Player  
GV Concerto 192 x 192 Stereo Router  
(64x64 AES/128x128 Analog)  
24 Benchmark Stereo Analog DAs  
8 Benchmark 4 Channel AES DAs  
2 Neural Upmix  
2 Neural Downmix  
2 Neural Mono to Stereo  
1 Neural Loudness Meter  
96 Channel Hydra Stage Box (upon request)

## REPLAY/RECORD

4 EVS HD XT LSM 6 Channel  
1 EVS HD XT2 XFile Archive Station  
EVS Sports Net2 Hub  
EVS IP Director Package (Upon Request)  
2 Panasonic AJ-HD1800 DVC Pro  
1 Sony A-500 Digital Betacam  
4 Panasonic DVD SD Recorder/Players  
3 DNF Slow Motion Controllers Add'l.  
Replay/Record Sources, SSMO  
(Upon Request)  
6 42" 16x9 HD LCD Monitors  
Evertz VIP-X Routing & Multi-Image Display

## TERMINAL

Evertz Master Timecode Generator  
GV Jupiter CM 3000 Control System  
3 Evertz Cross Converters  
80 AJA HD-SDI Down Converters  
5 AJA FS1 Converters  
5 AJA FS2 Frame Sync/Format Converters  
2 HD Color Correctors  
DSS Receiver  
Digital Demodulator  
2 Evertz 16ch Embedders

# F&F Productions, LLC

14333 Myerlake Circle · Clearwater, FL 33760 · (727) 530-5000 · [info@fandfhd.tv](mailto:info@fandfhd.tv)

### **CAMERAS & SUPPORT** (Wired for 16 Cameras)

12 Ikegami HDK-79EC HD Native Multi-Format  
CMOS Cameras w/ Triax Adapters  
4 Point Star Filters, Fixed or Variable Speed  
Shutter (1/60 to 1/2000)  
SMPTE Fiber Operation Upon Request  
7 Ikegami Super Expanders w/  
VFL 900 LCD Color Viewfinders  
7 Vinten Vector 700 Pan Heads & Tripods  
4 6 Vinten Vision Pan Heads & HH  
Tripods  
3 2 Vinten Dolly Wheels for Hard  
cameras  
2 1 Studio Build-Up Kits for Handheld cameras  
~~1 Sony HDW730 1080i ENG Camera w/  
22x7.8 lens~~  
~~2 Sony BVP550 Clock Cameras, Triax Only~~  
~~2 Ikegami HDL 40S Robotic Cameras~~  
(Fiber Operation Only and Upon Request)  
Addt'l. Cameras, Expanders, & SSMO  
(Upon Request)

### **HDTV LENSES**

3 Fujinon 101 x 8.9 Studio/Field w/stabilization  
4 Fujinon 87 x 9.3 Studio/Field w/stabilization  
3 Fujinon 22 x 7.8 ENG/EFP Handheld lenses  
2 Fujinon 13 x 4.5 ENG/EFP HH Wide Angle  
Addt'l. Specialty Lenses (Upon Request)

### **EXTERNAL MONITORS**

2 21" LCD HD Flat Panel  
3 17" LCD HD Booth Monitors  
10 13" LCD Booth/Field Monitors  
Additional Monitors (Upon Request)

### **MICROPHONES**

4 Sennheiser HMD-25 Announcer Headsets  
4 Sennheiser HMD-26 Announcer Headsets  
6 Sennheiser ME 67MP Shotgun Mics  
7 Sennheiser MKH 416 Shotgun Mics  
4 Sennheiser MD 46 Mics  
1 Sennheiser MKE 44-P Stereo Mic  
2 Sennheiser MKH 70 Mics  
6 EV 635A/B Mics  
5 Sony ECM77B Lavalier Mics  
5 Daltech Talk Back Boxes  
Addt'l. Specialty Mics (Upon Request)

### **COMMUNICATIONS**

RTS Adam 112x112 Matrix w/16 IFB Channels  
15 KP-32 ICOM Stations  
6 KP-12 ICOM Stations  
15 RTS IFB Belt Packs  
24 BP-325 Dual Listen Belt Packs  
20 Single Muff Headsets  
10 Double Muff Headsets  
20 Lightweight Headsets  
4 TIF and 3 QKTs  
1 PBX Phone System w/12 lines  
4 Ringdown circuits, Instruments  
6 Two Way Radios w/ Base Station w/  
RTS Interface  
Addt'l. KP Panels, Headsets, Belt Packs,  
Telos (Upon Request)

### **MISCELLANEOUS EQUIPMENT**

2 Lowell Light Kits w/ 4 Instruments each

### **BOOTH FIBER PACKAGE**

Telecast Adder II  
64 Configurable Audio Channels (4 x 16)  
4 Data Channels (Bi-directional) Telecast  
Viper w/6 HD/SDI, 1 Analog NTSC  
2500' Single Mode TAC 12

### **CABLE**

3000' DT 12 Audio Mult  
2500' Single Audio (various lengths)  
5000' Mini Triax (additional upon request)  
2000' Coax Video (various lengths)  
5 Pair and 10 Pair Coax Mults (various lengths)  
Addt'l. Cable & SMPTE Fiber (upon request)

### **POWER REQUIREMENTS**

3 Phase, 208 Volt, 400 amps  
(200 amp environmental, 200 amp technical)  
Maximum distance from Power Panel: 150'

### **DIMENSIONS (Expanded)**

W/Tractor: 74' L x 13'6" H x 13'5" W  
Without Tractor: 56' L  
Working Footprint: +5' around

### **B UNIT (Optional and Upon Request)**

### **DIMENSIONS)**

W/ Tractor: 71' L x 13'6" H x 8'6" W  
Without Tractor: 53' L  
Working Footprint: +5' around

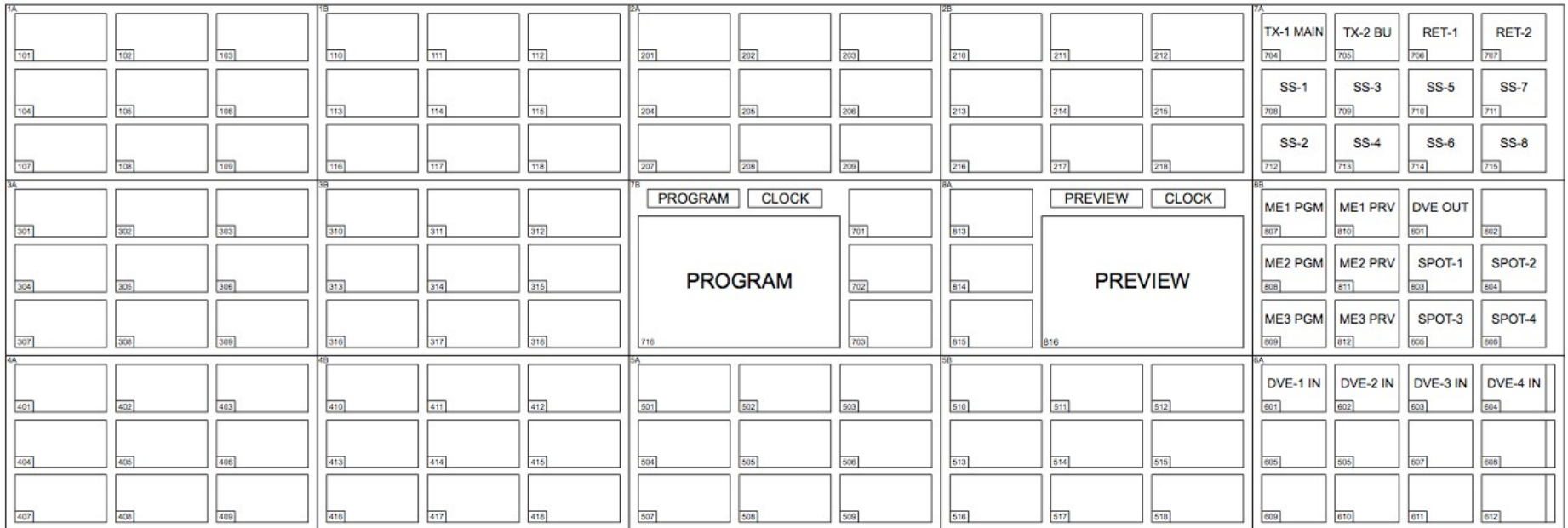
# **F&F Productions, LLC**

14333 Myerlake Circle · Clearwater, FL 33760 · (727) 530-5000 · [info@fandfhd.tv](mailto:info@fandfhd.tv)



# GTX-14 Virtual Monitor Wall

High Definition · 53' Single Expando · Multi-Format (Native 1080i, 720p, 24p, 30p)



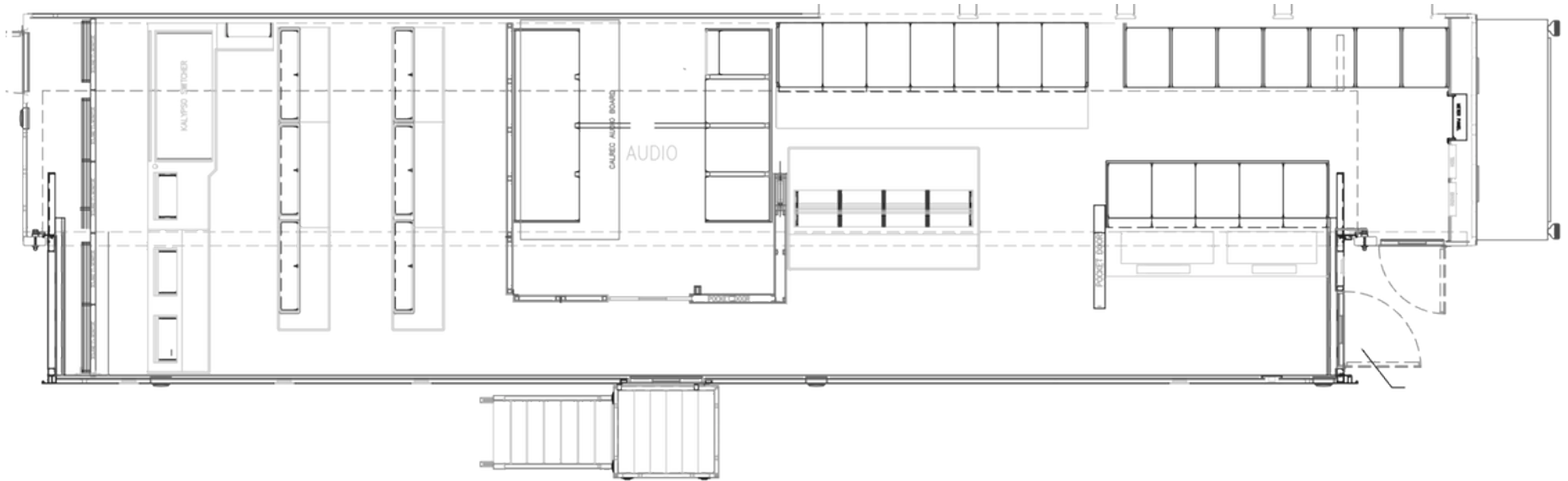
## F&F Productions, LLC

14333 Myerlake Circle · Clearwater, FL 33760 · (727) 530-5000 · [info@fandfhd.tv](mailto:info@fandfhd.tv)



# GTX-14 Truck Layout

High Definition · 53' Single Expando · Multi-Format (Native 1080i, 720p, 24p, 30p)



## F&F Productions, LLC

14333 Myerlake Circle · Clearwater, FL 33760 · (727) 530-5000 · [info@fandfhd.tv](mailto:info@fandfhd.tv)